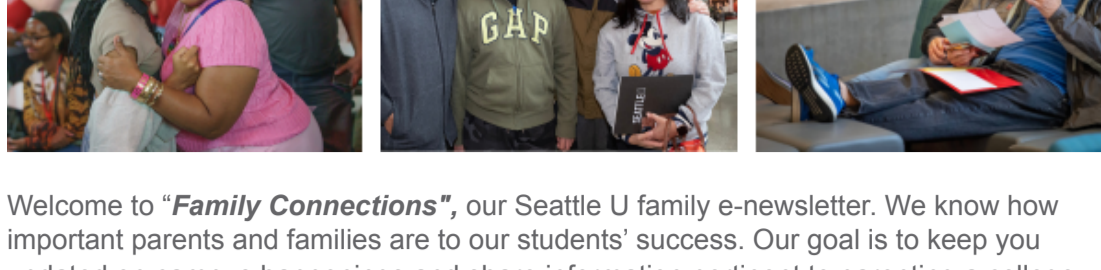


Parent and Family Engagement

By Seattle University • May 07, 2024



SEATTLE UNIVERSITY PARENTS & FAMILIES



Welcome to "*Family Connections*", our Seattle U family e-newsletter. We know how important parents and families are to our students' success. Our goal is to keep you updated on campus happenings and share information pertinent to parenting a college student.

Science & Engineering Projects Day



The College of Science and Engineering [Projects Day](#) is May 31. This is where graduating seniors in engineering, environmental science and computer science will reveal the results of yearlong industry-led projects.

FAFSA/WASFA Drop In Help



Does your student still need to file a FAFSA for the 2024-25 academic year? Our Student Financial Services Team is offering help. Encourage them to attend the Filing Event on **Thursday, May 16th; Lemieux Library Room 369 11-2pm.**

<https://seattleu.campuslabs.com/engage/event/10137330>

Housing Updates-summer/fall dates, spring closing

Summer housing:

The summer housing application is now open on the [SU Housing Portal](#). Students who will still be enrolled for Fall 2024 are eligible for summer housing (students do not necessarily need to be enrolled in summer school to live in summer housing). This is a great opportunity to enjoy summer in Seattle and remain in the area for jobs or internships!

All summer housing is in Murphy apartments.

We have single and shared room options available, and pricing can be found here: [Summer Housing](#) | [Applying for Housing](#) | [Housing and Residence Life](#) | [Seattle University](#).

We will continue to assign students on a rolling basis as we receive new applications throughout May and early June.

Current residents will be approved to stay in their current room assignments until Friday, June 14, the date that they will make their spring-to-summer housing transition (with the exception of current BELL residents who will need to make their move on Tuesday, June 11, due to the start of the window project).

Closing dates and information:

On May 20, students will receive a formal email with detailed closing information. Posters and bulletin boards that outline important steps in the closing and check-out process will also be posted in the residence halls. Students may also contact their RA, their front desk, or Area Coordinator staff to ask questions.

All residence halls close on Saturday, June 8, 2024, at 12 PM.

Students who are graduating this spring are automatically approved for a late departure until Monday, June 10 at 12 PM (a formal email will be sent to this population in May).

All other students who need to request a late departure can do that on the Housing Portal starting in mid-May. The latest you can request to stay late is Tuesday, June 11, at 12 PM

Storage: SU does not provide summer storage. Students are encouraged to look at some options now:

[Dorm Room Movers](#) (they will come to your residence hall and take away your items, and will return them in the fall when you return!)

[Urban Storage](#): located next to the bookstore

Fall dates:

The halls open for continuing students on Sunday, September 22, 2024.

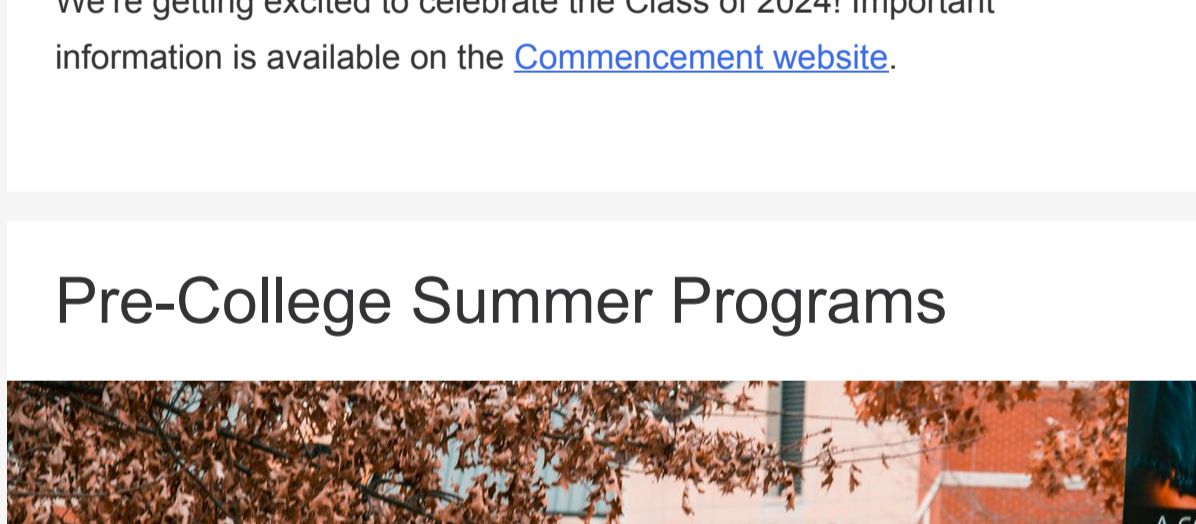
Students will need to sign up for a move-in appointment on the Housing Portal starting August 5.

First-year move-in is Saturday, September 21, 2024, by chosen appointment.

Students may request an early arrival on the Housing Portal starting in mid-August.

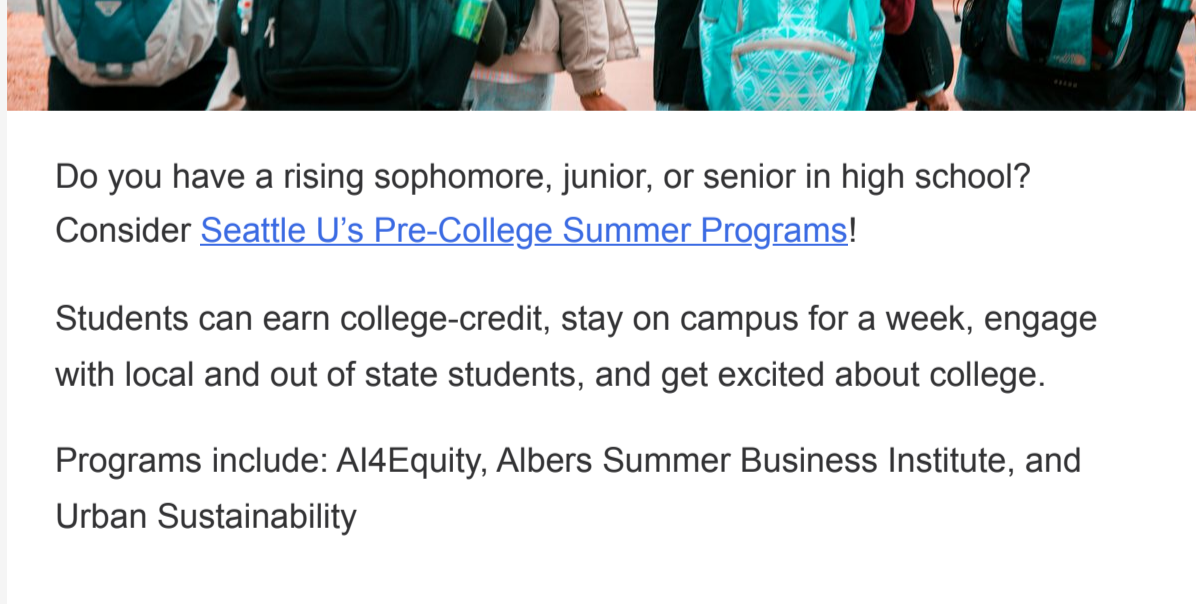
Move-in information and details will be sent to students on August 5, 2024.

Commencement



We're getting excited to celebrate the Class of 2024! Important information is available on the [Commencement website](#).

Pre-College Summer Programs



Do you have a rising sophomore, junior, or senior in high school? Consider [Seattle U's Pre-College Summer Programs!](#)

Students can earn college-credit, stay on campus for a week, engage with local and out of state students, and get excited about college.

Programs include: AI4Equity, Albers Summer Business Institute, and Urban Sustainability

May questions to ask your Redhawk...

What are some things you want to do before the academic year is over?

Are you beginning the process of selling, donating, recycling and tossing unwanted items before you move out of your current on/off campus housing?

Important links for you...

THIRD PARTY ACCESS TO STUDENT FINANCIAL INFORMATION:

There are two types of suggested access that students may give to parents or supporters.

Proxy Access allows family/supporter to speak to SFS Office about account status, balance, award letter, and required documentation.

Authorized User Access allows family/supporter login access view billing and payment information, setup payment plans, see tax documents, and get email notifications about billing invoicing. [Check out our video](#) for step-by-step instructions for how a student can set up Proxy and Authorized User access for family or supporters.

STUDENT FINANCIAL SERVICES NEWS: [Quarterly Newsletters](#)

CAMPUS HAPPENINGS/IMPORTANT DATES

Keep track of important academic dates with the [Academic Calendar](#).

See club events and student activities on [ConnectSU](#).

Check out upcoming [Music, Theatre and Gallery Openings](#).

Show your SU Redhawk Spirit! Info on [Athletic Events](#).

PARENT AND FAMILY FACEBOOK GROUP

We invite you to join our [Seattle U Families Facebook](#) group. Be part of this virtual community just for SU parents and families! Share your experiences, ask questions and support one another. You are important members of the Redhawk family!

Questions? Please contact me. Laurie Prince, Director-Parent & Family Engagement, 206-296-6291, parents@seattleu.edu, www.seattleu.edu/pfe

[Unsubscribe](#)

This email was sent by Seattle University via [Axios HQ](#)